

**EWLA 10 YEARS: Law as politics - in societies at a crossroads**

A Conference held in Brussels on 3 and 4 June 2010

PROGRAMME**Wednesday 2 June 2010**

**19:00** Welcome reception at the restaurant La Chaloupe d'Or, Grand Place, Brussels

**Thursday 3 June 2010**

Venue: Representation of the Free State of Bavaria to the European Union  
77 Rue Wiertz, 1000 Brussels

**8:30-9:00** Registration

**9:00-9:30** Welcome by the President of EWLA, Professor Dr. *Herdís Thorgeirsdóttir* and the Head of the Representation of the Free State of Bavaria to the European Union, Dr. *Angelika Schlunck*

**9:30-10:00** Key note speaker: President of the European Council Mr *Herman van Rompuy*

**10:00-10:30** Panel discussion: 10 years of EWLA achievements and perspectives  
Chaired by *Sophia Spiliotopoulos*, past vice-president of EWLA  
Past president of EWLA *Leena Linnainmaa*  
Past president of EWLA *Elisabeth Kotthaus*  
President of EWLA *Herdís Thorgeirsdóttir*

**10:30-11:00** Coffee

**11:00-11:25** Key note speaker: Vice-President of the European Parliament Ms *Diana Wallis*

**11:25-11:40** Discussion with Ms *Wallis*

**11:40-13:00** Panel discussion:

**Women and management in a changing business world**

Chaired by *Myriam van Varenbergh*, Partner, Keuleneer-Storm-Vannest-Van Varenbergh-Verhelst

- *Ann de Jaeger*, Managing Partner, Executive Learning Partnership
- *Mechthilde Maier*, Head of Group Diversity Management, Deutsche Telekom
- *Ann Sajavaara*, Senior Adviser, Confederation of Finnish Industries EK
- *Christel Verschaeren*, Director, IBM Belgium NV

**13:00-14:30** Lunch

**15:00 - 17:00** Parallel work shops:

\* **The influence of globalisation on the changing landscape of human rights protection and politics in Europe**

Chaired by Professor Dr. *Beate Rudolf*, Director of the German Institute for Human Rights

- *Tanja Kleinsorge*, Council of Europe, Head of Secretariat, Social, Health and Family Affairs Committee, Parliamentary Assembly

Speakers of the work shop will be announced soon

\* **The influence of globalisation on financial crisis and risk management**

Chaired by *Vanessa Williams*, partner Rochman Landau

- *Marie Donnay*, Senior Economist, Directorate Macroeconomic Stability, DG ECFIN
- *Maire Laitinen*, Head of Segment / B2B, Fondia Finland
- *Sibylle Spitzer*, Deputy General Counsel, Recticel Belgium
- *Corinna Ullrich*, Senior Policy Officer, European Commission, DG MARKT

\* **The influence of globalisation on the position of women in the labour market**

Chaired by Dr. *Daniela Bankier*, Head of unit Equality between women and men, European Commission, DG Employment, Social Affairs, Equal Opportunities

- *Catelene Passchier*, Confederal Secretary, European Trade Union Confederation (ETUC)
- *Edith Bauer*, MEP, member of Committee on Women's Rights and Gender Equality (FEMM)
- *Minna Etu-Seppälä*, BUSINESSEUROPE
- *Béatrice Castellane*, Business Lawyer (Corporate Law and Arbitration)

Work shops will have a coffee break

**17:00 – 17:30 Setting up EWLA working groups** (for EWLA members only)

EWLA Working Group on Fundamental Rights

EWLA Working Group on Gender Equality

EWLA Working Group on Corporate and Business Matters

**19:30** Gala dinner at Club de Warande in the Royal district of Brussels

Rue Zinner 1, 1000 Brussels

**Friday 4 June**

**9:00- 9:45** Speech on the impact of new social media by *Ben Caudron*

**9:45 -11:00** Panel discussion: **Gender equality on the European agenda**

- *Capitolina Díaz Martínez*, Director General of Equality in Employment, Equality Ministry of Spain

- Belinda Pyke, Director, European Commission, DG Employment
  - A member of the European Parliament (tbc)
- Other panelists will be announced soon

**11:00-11:30** Coffee

**11:30-13:00** Parallel work shops

\* **Corporate governance and gender diversity**

Chaired by *Dace L. Luters-Thuermann*, MELS, Partner, Heitmann Vermeer Kolle, Dueseldorf/Germany and Sikora & Partners, Riga/Latvia

- *Livia Aliberti Amidani*, Founder, Aliberti Governance Advisors
- *Dominique de La Garanderie*, founding partner, La Garanderie & Partners
- *Elin Hurvenes*, Founder, Professional Boards Forum (tbc)
- *Gabriele C. Klug*, City Treasurer, Deutscher Juristinnenbund
- *Leena Linnainmaa*, Director, Central Chamber of Commerce of Finland

\* **The influence of globalisation on family law**

Chaired by EWLA vice president, Prof. Dr. *Regula Kägi-Diener*, University of St. Gallen

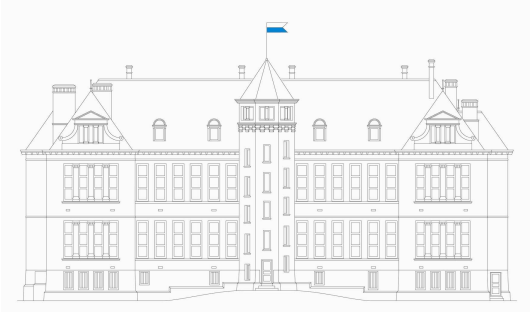
- *Maria del Rosaria Garcia Mariscal*, attorney at Law, García- Mariscal International Law Firm
  - Dr. *Katalin Daskalovics*, attorney-at-law, specialized in family law, Budapest
  - *Susanne Koehler*, attorney-at-law, Staab & Kollegen, Dresden
- Other speakers of the work shop will be announced soon

**13:00- 14:00** Lunch

**14:00- 15:00** Closing session, EWLA working-groups and General Assembly of EWLA

**15:30** Special guided tour of the tourist attractions of Brussels or of the European Parliament

Supporters of EWLA 10<sup>th</sup> anniversary congress:



Representation of the Free State of Bavaria  
to the European Union



Confederation of Finnish Industries



## **Hotels in Brussels**

(please note, that these are recommendations only, participants are in charge of arranging for their own ac-commodations)

### **In the EU district, near the congress venue:**

Radisson Blu EU Hotel

<http://www.radissonblu.com/euhotel-brussels>

Renaissance Brussels Hotel

<http://www.marriott.com/hotels/travel/brubr-renaissance-brussels-hotel/>

### **In the centre of Brussels:**

Hotel Metropole

<http://www.metropolehotel.com/>

Royal Windsor Hotel

<http://www.royalwindsorbrussels.com/>

Radisson Blu Royal Hotel

<http://www.radissonblu.com/royalhotel-brussels>

### **For more information on Brussels, please visit:**

Brussels tourist office: <http://www.brussels.org/>

Brussels International: <http://www.brusselsinternational.be/wabxlint/en/visitor/brussels-tourism-visit.act>

Brussels Airport: <http://www.brusselsairport.be/en/>

Brussels public transport: <http://www.stib.be/netplan-plan-reseau.html?l=en>